

Tagservice rapport












Karakter	Anslået levetid	Kriterie	Handling
1 = Meget god eller nyt	8 år eller mere	Ingen skader: Emne intakt	Almindelig renholdelse.
2 = Rimelig god	5 - 8 år	Ingen skader: Emne har kun mindre slidtage.	Almindelig renholdelse.
3 = Middel	3 - 5 år	Mindre synlige tegn på begyndende slidtage.	Almindelig renholdelse, mindre reparationer, planlagt eller forbyggende vedligehold må påregnes.
4 = Mindre god	1 - 3 år	Synlige tegn på begyndende slidtage.	Større reparationer, planlagt eller forebyggende vedligehold må påregnes.
5 = Meget dårlig	0 - 1 år	Store skader i emne, omfattende slitage.	Udskiftning tilrådes snarest.



EF Hørsholm Park, Tagservice 2023. → Hørsholm Park 1-2.

Projekt:	[3934-002] EF Hørsholm Park, Tagservice 2023. → Hørsholm Park 1-2.		
Id-nummer:	TAG-6119	Oprettet af:	Janus Wartou Mortensen
Skema:	Tagservice rapport.	Oprettet:	13-11-2023 09:43
Tag ?:	Hørsholm park 1-2	Faggruppe:	Tagdækker, Servicegruppen



Spørgsmål:	Besvarelse:	Dato	Af	
Tagdækning				
1. Tagbelægning	Tagpap	13-11-2023 09:22	JW	
2. Tagets generelle tilstand	2. Rimelig god 5 - 8 år.	13-11-2023 09:22	JW	
3. Lunger	Rimelig god = 2	13-11-2023 09:22	JW	
4. Manglende granulat	Rimelig god = 2	13-11-2023 09:22	JW	
5. Begyndende revner	Rimelig god = 2	13-11-2023 09:22	JW	
6. Samlinger trækker sig	Rimelig god = 2	13-11-2023 09:22	JW	

7. Gennemføringer	Rimelig god = 2	13-11-2023 09:22	JW	
8. Fuger v. gennemføringer	Rimelig god = 2	13-11-2023 09:22	JW	
9. Opkanter, frihøjde (14 cm ideelt)	Rimelig god = 2	13-11-2023 09:22	JW	
10. Fuger v. løskanter - klemskinner	Rimelig god = 2	13-11-2023 09:22	JW	
11. Skotrender - Kasserende	Rimelig god = 2	13-11-2023 09:22	JW	
12. Inddækninger	Rimelig god = 2	13-11-2023 09:22	JW	
13. Sternkapsler	Rimelig god = 2	13-11-2023 09:22	JW	
14. Tagfod	Ikke relevant	13-11-2023 09:22	JW	
15. Tagrender	Ikke relevant	13-11-2023 09:22	JW	
16. Tagbrønde alm.	Rimelig god = 2	13-11-2023 09:22	JW	
17. UV-tagbrønde	Ikke relevant	13-11-2023 09:22	JW	
18. Mosbegrøning	Meget god = 1	13-11-2023 09:22	JW	
Ovenlys				
19. Kupler	Rimelig god = 2	13-11-2023 09:22	JW	
20. Inddækninger	Rimelig god = 2	13-11-2023 09:22	JW	
21. Mosbegrøning /alger	Rimelig god = 2	13-11-2023 09:22	JW	
Diverse				
22. Hætter	Rimelig god = 2	13-11-2023 09:22	JW	
23. Ventilation	Rimelig god = 2	13-11-2023 09:22	JW	
24. Murkrone	Ikke relevant	13-11-2023 09:22	JW	
Faldsikring				
25. Faldsikring	Ja	13-11-2023 09:22	JW	

26. Serviceeftersyn	Ja	13-11-2023 09:22	JW	
Kommentar 01 2024				
27. Type	Wire system med opstander.	13-11-2023 09:22	JW	
Kommentar Og ankerpunkt				
28. Fejl på Faldsikring	Nej	13-11-2023 09:22	JW	
29. Stiger - Efterset	Ikke relevant	13-11-2023 09:22	JW	
Servicelog				
30. Servicelog	- Jf. serviceaftale - Rengøring foretaget - Ingen skader konstateret	13-11-2023 09:22	JW	

**Dokumentation for - 2. Tagets
generelle tilstand**



Dokumentation for - 3. Lunker



**Dokumentation for - 4.
Manglende granulat**



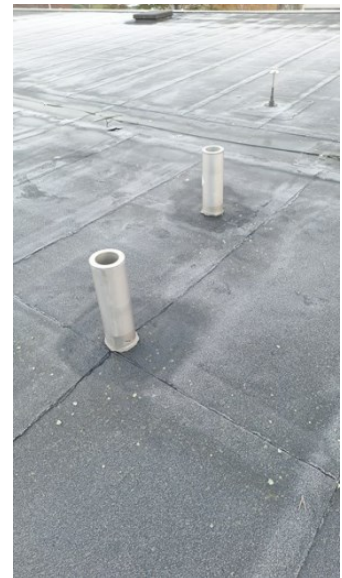
Dokumentation for - 5.
Begyndende revner



Dokumentation for - 6.
Samlinger trækker sig

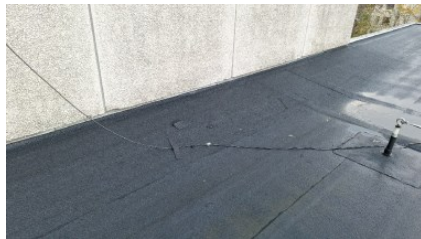


Dokumentation for - 7.
Gennemføringer

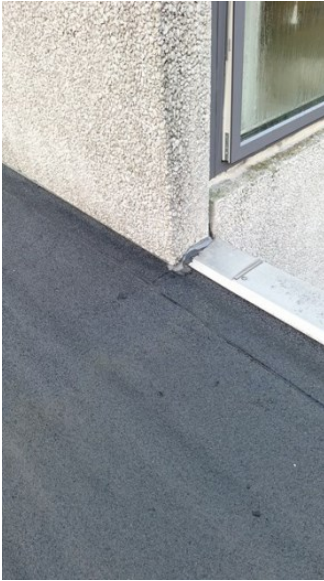




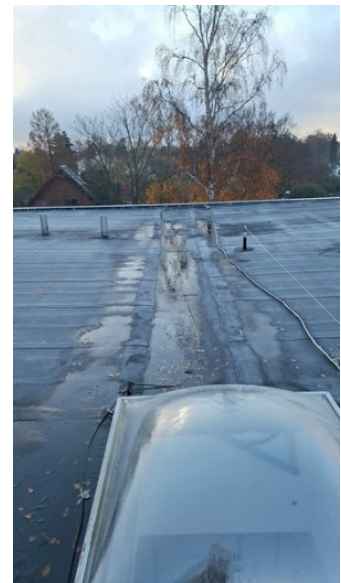
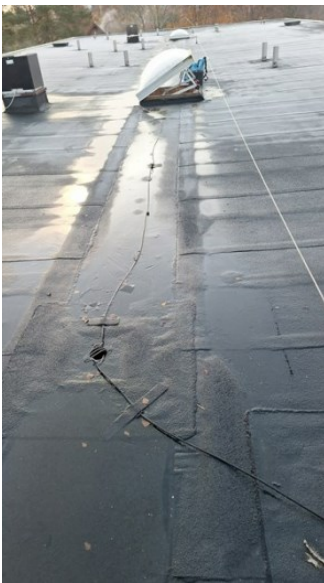
**Dokumentation for - 9. Opkanter,
frihøjde (14 cm ideelt)**



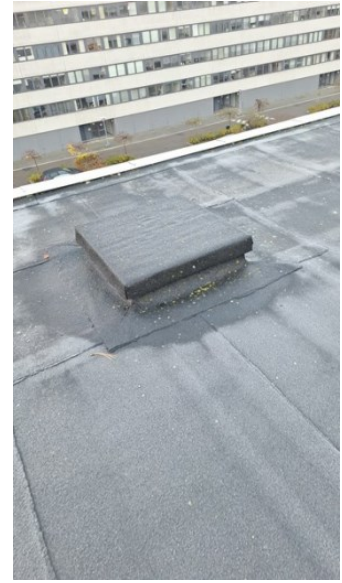
**Dokumentation for - 10. Fuger v.
løskanter - klemskinner**



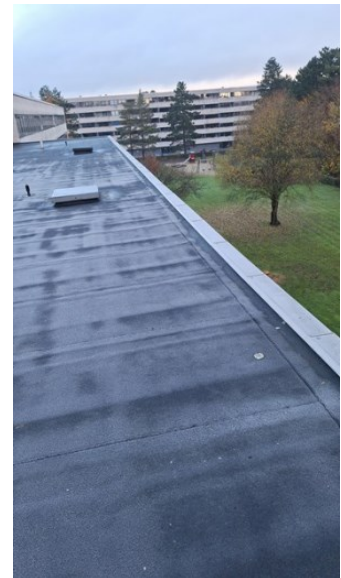
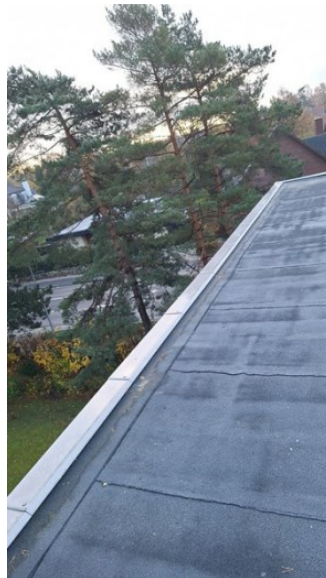
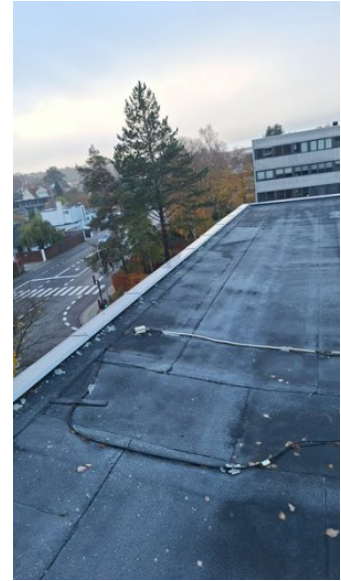
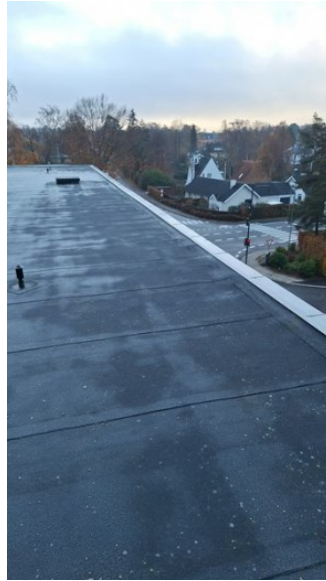
**Dokumentation for - 11.
Skotrender - Kasserende**



Dokumentation for - 12.
Inddækninger

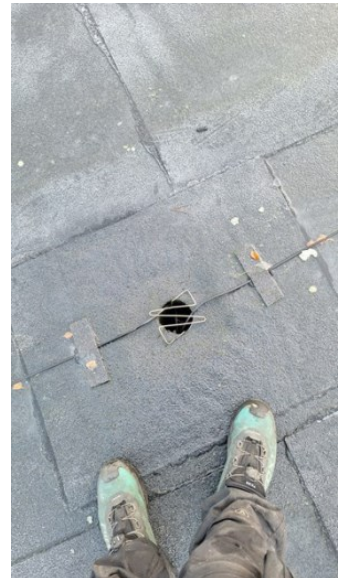


Dokumentation for - 13.
Sternkapsler





Dokumentation for - 16.
Tagbrønde alm.

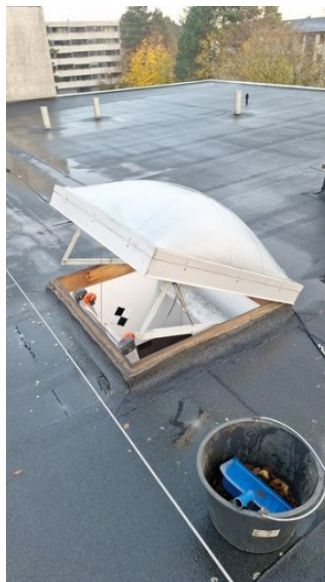




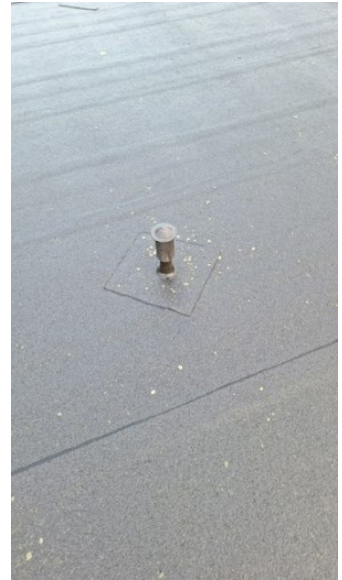
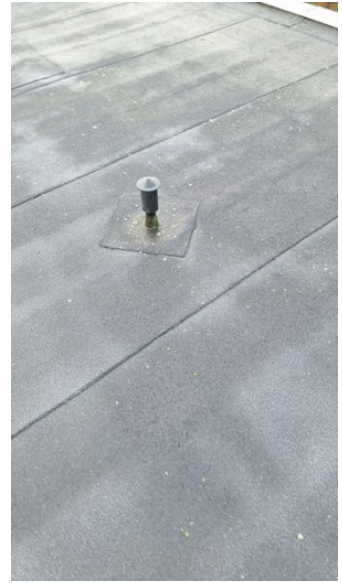
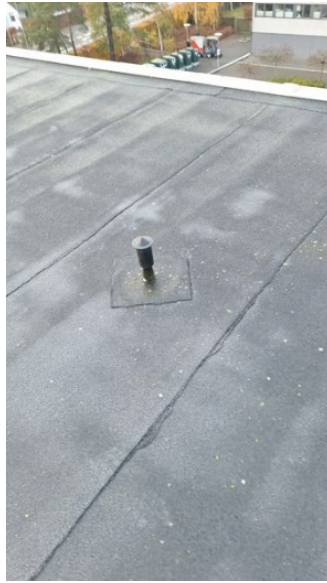
Dokumentation for - 18.
Mosbegrøning



Dokumentation for - 19. Kupler



Dokumentation for - 22. Hætter



Dokumentation for - 23.
Ventilation



Dokumentation for - 26.
Serviceeftersyn



Dokumentation for - 27. Type

